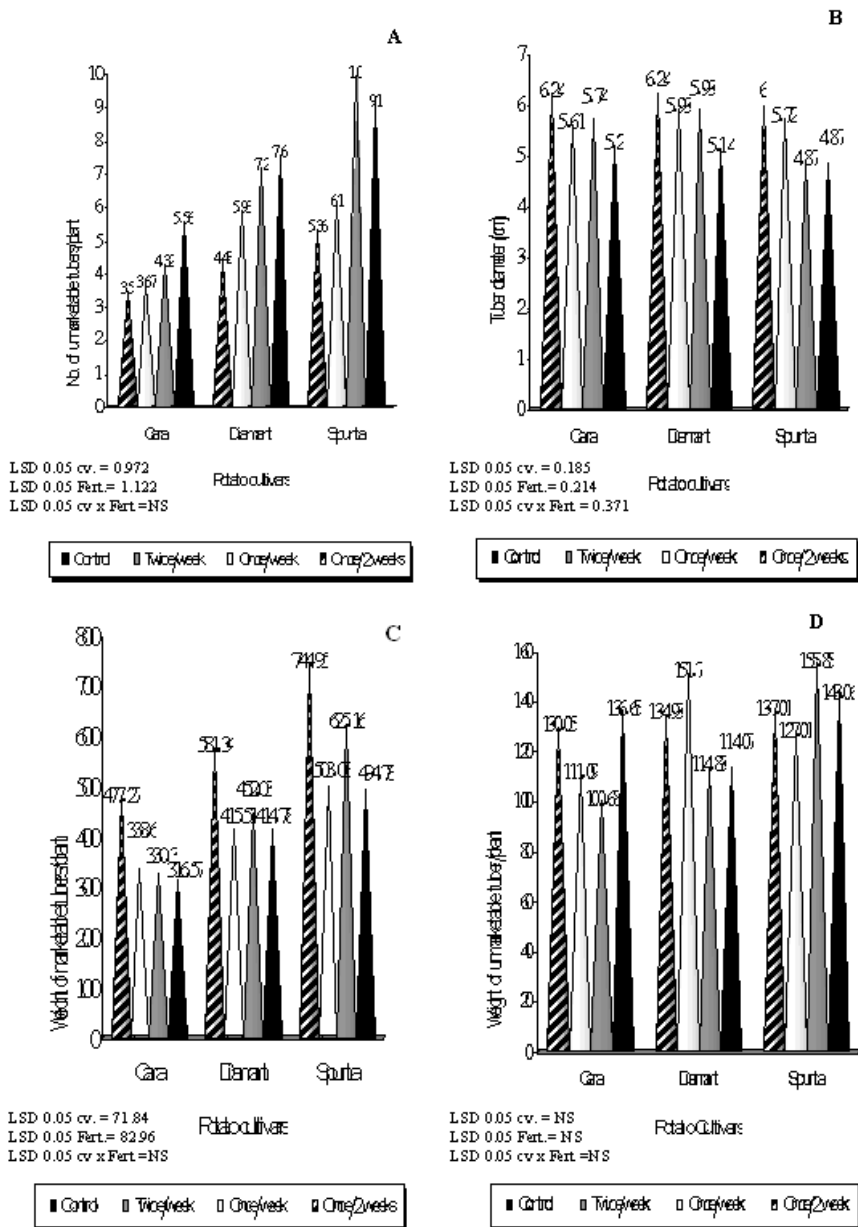
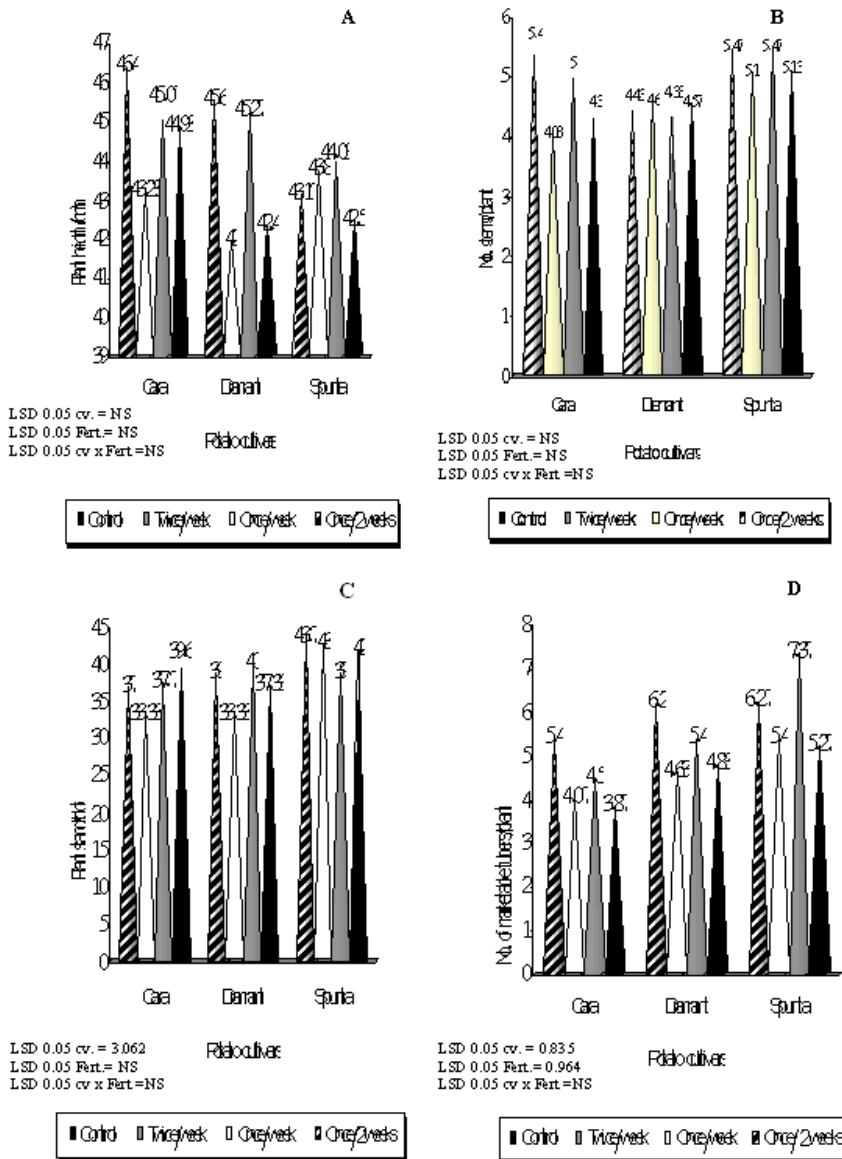


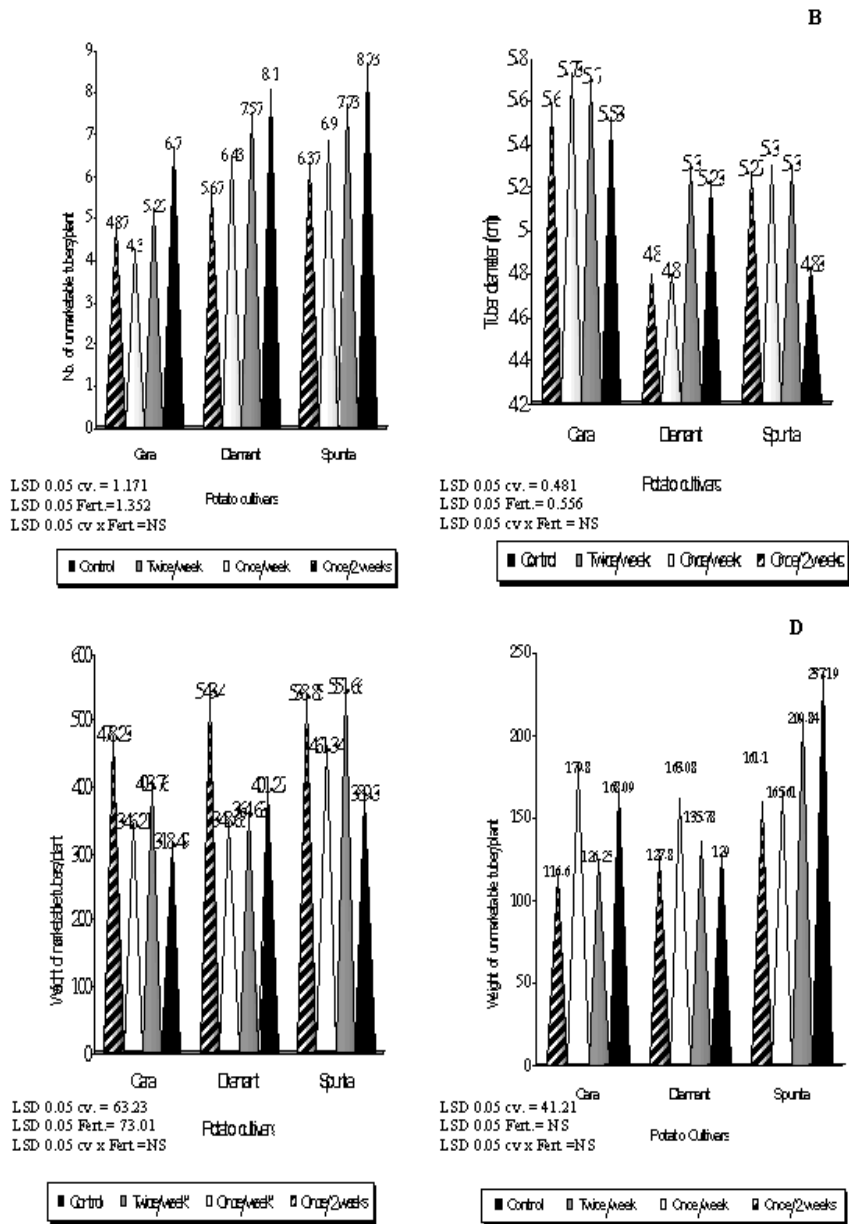
Fig(1): Potato growth, yield and quality as affected by cultivars and frequency of Zn and Mn foliar application, season 2005/2006. A : Plant height (cm); B: Number of stems/plant; C: Plant stand/plot; and D: number of marketable tubers/plant.



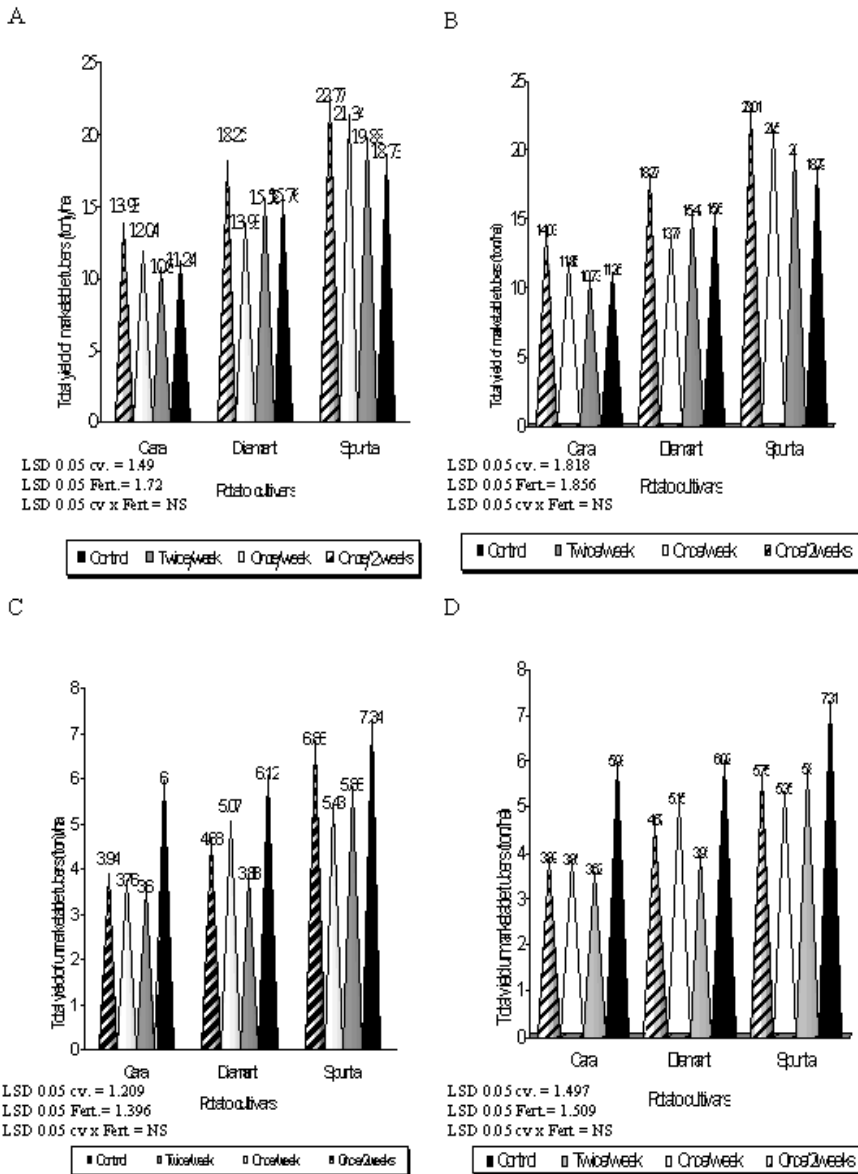
Fig(2): Potato growth, yield and quality as affected by cultivars and frequency of Zn and Mn foliar application, season 2005/2006. A: number of unmarketable tubers/plant; B: tuber diameter (cm); C: weight of marketable tubers (g)/plant; and D: weight of unmarketable tubers (g)/plant.



Fig(3): Potato growth, yield and quality as affected by cultivars and frequency of Zn and Mn foliar application, season 2006/2007. A : Plant height (cm); B: Number of stems/plant; C: Plant stand/plot; and D: number of marketable tubers/plant.

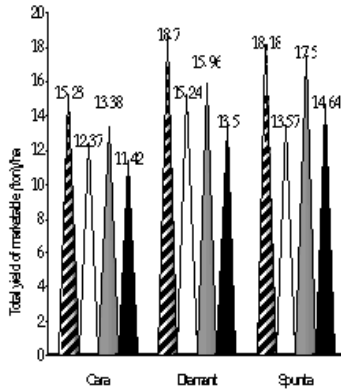


Fig(4): Potato growth, yield and quality as affected by cultivars and frequency of Zn and Mn foliar application, season 2006/2007. A: number of unmarketable tubers/ plant; B: tuber diameter (cm); C: weight of marketable tubers (g)/plant; and D: weight of non-marketable tubers (g)/plant.



Fig(5): Unadjusted and Adjusted means of total yield of marketable and unmarketable tubers of the tested potato cultivars in 2005/2006: A) Unadjusted means of total yield of marketable tubers, B) Adjusted means of total yield of marketable tubers, C) Unadjusted means of total yield of unmarketable tubers and D) Adjusted means of total yield of unmarketable tubers.

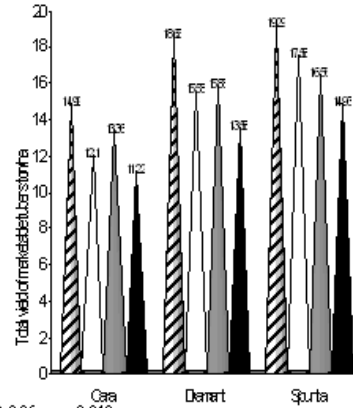
A



LSD 0.05 cv. = 1.907
 LSD 0.05 Fert. = 2.02
 LSD 0.05 cv x Fert = NS



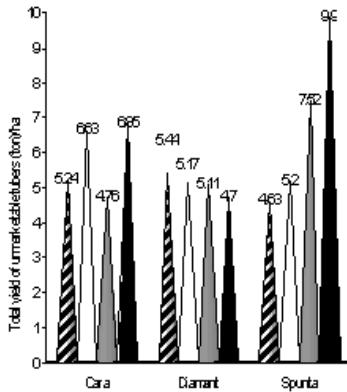
B



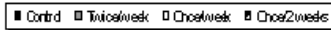
LSD 0.05 cv. = 2.240
 LSD 0.05 Fert. = 2.327
 LSD 0.05 cv x Fert = NS



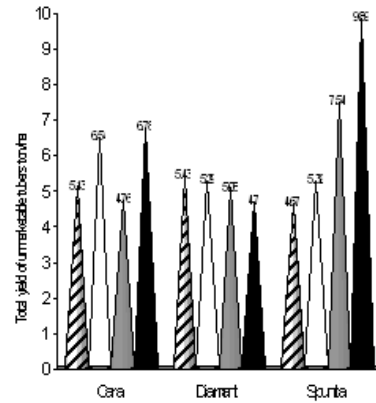
C



LSD 0.05 cv. = 1.221
 LSD 0.05 Fert. = 1.410
 LSD 0.05 cv x Fert = 2.442



D



LSD 0.05 cv. = 1.439
 LSD 0.05 Fert. = 1.495
 LSD 0.05 cv x Fert = 2.439



Fig(6): Unadjusted and Adjusted means of total yield of marketable and unmarketable tubers of the tested potato cultivars in 2006/2007: A) Unadjusted means of total yield of marketable tubers, B) Adjusted means of total yield of marketable tubers, C) Unadjusted means of total yield of unmarketable tubers and D) Adjusted means of total yield of unmarketable tubers.